

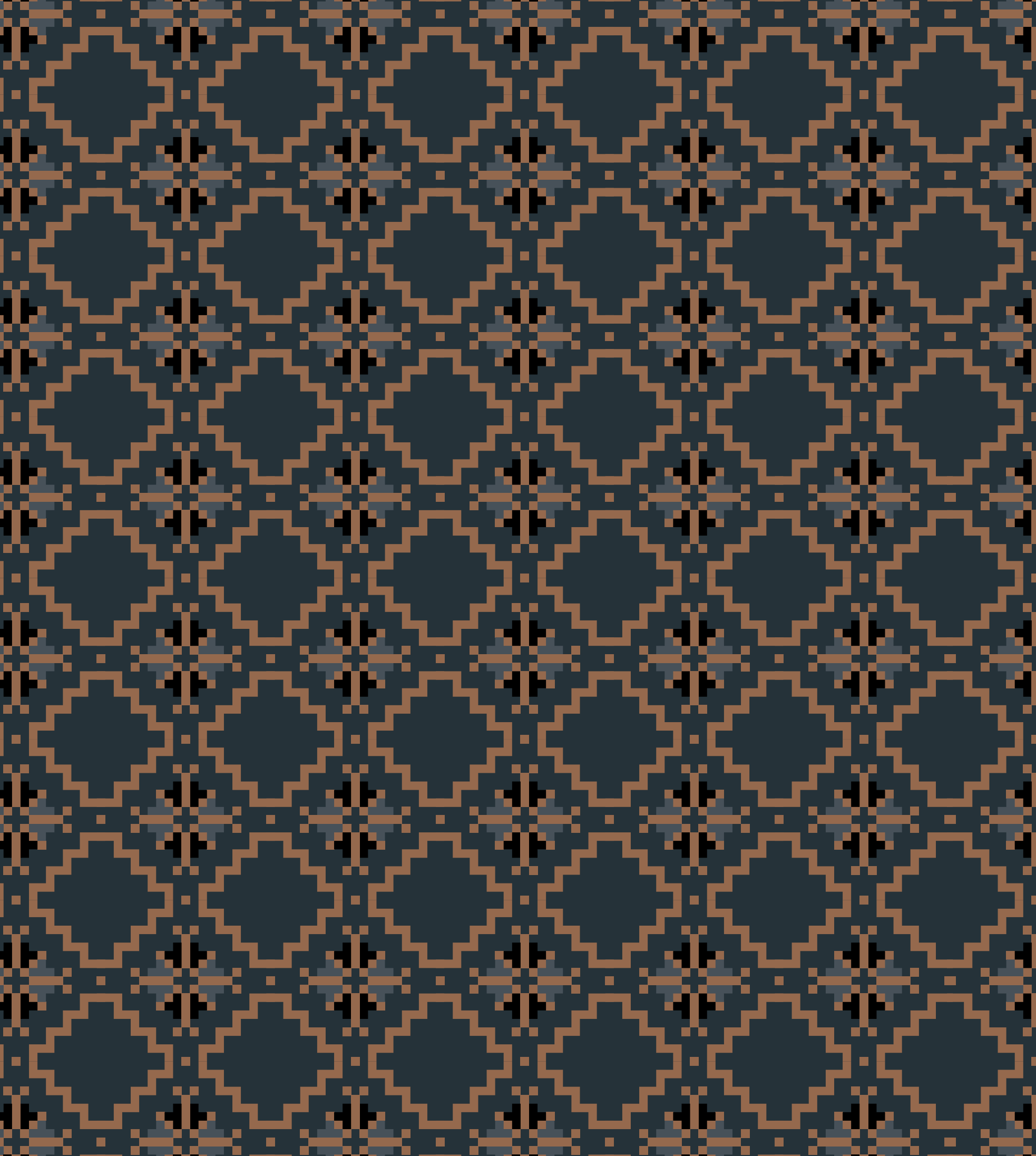


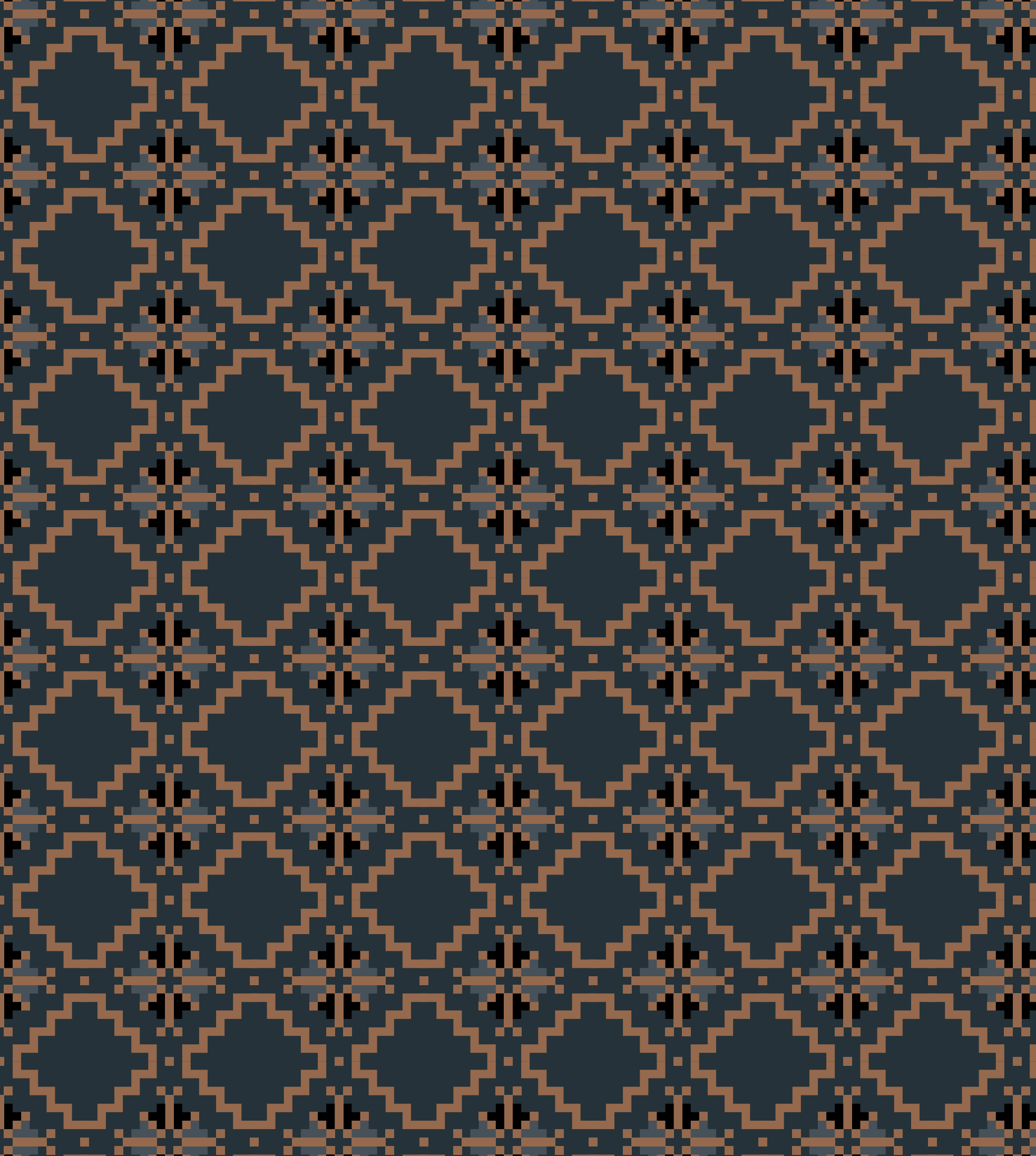
LIVING

Classic Collection



AM FURNITURE GROUP  
SINCE 1962











**AM FURNITURE GROUP**  
SINCE 1962

With almost six decades of history, tradition and innovation, AMfurniture Group was born from Armando and Fernanda Ferreira da Silva's dream of bringing high-end woodwork craftsmanship and technical expertise together. Established in Paços de Ferreira, the northern-Portuguese heart of furniture industry, the couple created AMfurniture Group, which rooted its name in the pillars of quality and permanent innovation. Our exclusive aim is to bring the upmost comfort and beauty to houses and people all around the globe. And this is what this visual experience testifies to.

60  
years

develops and manufactures  
furniture since 1962, combining  
handwork expertise with  
technology and innovation





AMliving classic collection

From Baroque to Directoire inspirations, each piece of AMliving classic collection has its own unique concept, history and aesthetic.

We brought the highest quality pieces together to create four unforgettable atmospheres, in which every single chair, statue, painting and book plays a significant part.

Welcome to a new visual experience  
brought to you by AMliving!

No, this is not a furniture catalog.

This is no cold display of soulless objects.

These are real homes, full of real people and real stories which fully reflect our values, our message and our desire to bring the past and the present together.





Classic Collection

4 real houses, full of real people and real stories

**Nelson, Gabrielle & George 7 — 41**

**Viktor 42 — 63**

**Margarita, Maria, Emily & Aurora 64 — 91**

**Sylvie 92 — 115**

Visual index 140 — 149

Product listing 151 — 171

Finishes 172 — 175

THE HOME OF

# Nelson, Gabrielle & George

One traditional modern family: married in 1989, this charming couple of financial executives has a unique taste for fine arts, culture and history.

As a matter of fact, Nelson met Gabrielle quite unexpectedly when both were at the Paris Opera to attend a performance of La Sylphide. It's no surprise that their matrimonial life has been devoted to every form of artistic expression.

## Nelson, Gabrielle & George

And then there's George: a vibrant lad in his 30s who nurtures a hedonist passion for life, beauty and comfort.

Unlike his parents, George enjoys the bohemian life and never gets enough of partying with his friends, traveling around the world and fulfilling his taste for high-end goods and experiences.

Yes, that includes décor elements, of course.





Nelson, Gabrielle & George

The living

Yet another place full of contrasts - vibrant blue, appealing red, and the harmony of natural cherry wood is pretty much everywhere. Just in case there were still any doubts regarding this family's absolute favorite color! Is there anything more appealing than blue velvet? Sure. A quiet corner full of books and comfy chairs – says Nelson.











DESIGN IN  
AT  
MANTUEL CARGALEIRO  
EDIFICIOS C  
ELITE

VERO KRELA MURIEL  
Para Uma História de São Paulo  
GEORGE BRANCO  
LUCIANO KLEIN  
GRACA NORAIS  
VERA DA SILVA  
MORRER A OCIDENTE  
WORLD - MURIEL BRANDOLINI

LAURA CATSO

EDIFICIOS C  
ELITE

EDIFICIOS C  
ELITE





Nelson and Gabrielle are extremely passionate about reading and this is where the businessman spends most of his free time. This Directoire bookcase hosts more than 200 volumes and Nelson's collection isn't anywhere close to being finished. Can you sense Gabrielle's love for classical lines in those Tamara armchairs and in the carved details of that lovely side table?





Nelson, Gabrielle & George





The office

Here we can find a more pragmatic style reflected in the neoclassical lines and straight design of each element.

This desk stands out for its exclusive blue lining.

Some more neoclassical influence in the Louis XVI chairs...

And in the next page, a close-up of the most iconic element in the whole office: Parati chest of drawers.



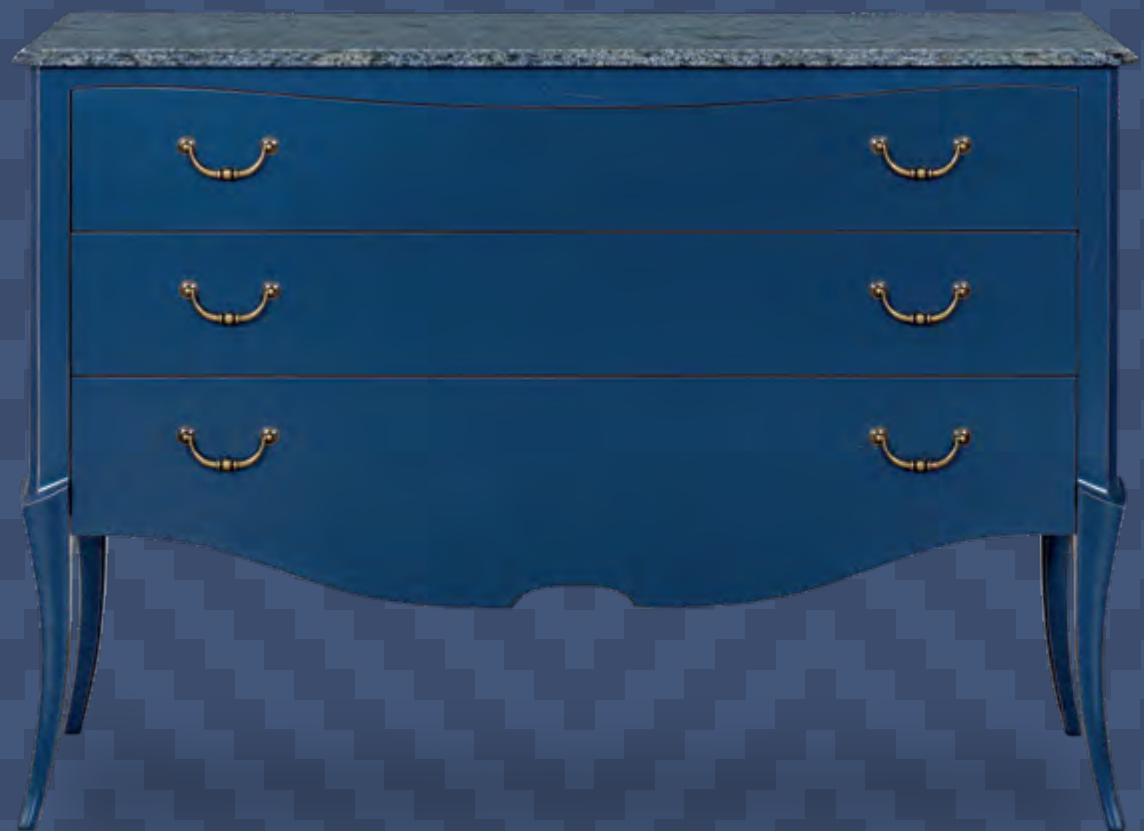








Nelson, Gabrielle & George









Nelson, Gabrielle & George





### George's room

Believe it or not, George was the one in charge of his bedroom's décor just last year.

The daring contrast between those hypnotizing shades of blue and the sensual chinoise red creates an atmosphere which truly reflects George's energetic and passionate personality. Here and there you may also find some unexpected, sober classic touches... Gabrielle's hand, no doubt!

George is not fond of straight conventional lines. The word irreverence comes to mind when looking at this bed and those bedside tables.

George chose this beautifully checkered lining for his Matisse bed. Irreverent, to say the least.





Here we have the Isadora wardrobe, granting this bedroom a classic twist, with its traditional design and sober beige. And this captivating France bureau is George's favorite element. It couldn't be otherwise, given the unique color contrast it presents.

Our extravagant lad had to find a way of making a delicate and classical piece such as the Vienna armchair look trendy and showy: This marvelous striped lining was the answer.





Nelson, Gabrielle & George











Nelson, Gabrielle & George



### The couple's bedroom

A soft ambient that reflects Gabrielle's personality, energy and tastes in its balanced and elegant profusion of navy blue, amaretto and natural cherry wood.

This Juliette bed stands out for its magnificent tweed lining, bringing some flare to this quiet atmosphere. And this majestic Louis XV chest of drawers is Gabrielle's favorite piece. She's particularly fond of its vibrant navy blue top and the irregular contours. Some more natural cherry details, and...

Navy blue has a special place in this family's heart. And finally, Nelson's little private reading corner, with its cozy Louis XV armchair and delicate Caroline side table.

He cherishes this tiny refuge more than any other place in the world!





THE HOME OF

# Viktor

This is the haven of an independent, quiet, sober man. An architect in his late forties who could never get used to co-living. No, not even with his three former wives. And this mansion is a perfect mirror of a lonely soul full of idiosyncrasies. Almost austere in its profusion of soft nude colors and geometrical elements, this house was meant as a showroom for Viktor's ever-growing collection of paintings, books and fine archeological relics.





Viktor





### The entryway

The first element you'll see here mirrors perfectly Viktor's passion for the neoclassic just as well as his own character.

In fact, this sideboard is his favorite furniture element in the entire house.

Adonis is a tribute to Greek architecture and aesthetics: Its symmetric design, delicate carved elements and, especially, the Parthenon-inspired columns on its basis really embody the soul and ambiance of this mansion.

There's also some space for a Rocaille touch, represented by this dainty Vienna armchair.

You see, even when flowers, leaves and non-symmetric elements were allowed, Viktor remained faithful to his love for sober, nude colors.





Viktor

The living

Take note, these two striped-lined majestic sofas weren't exactly Viktor's idea. The sofas, as well as those very lively pillows, were a gift from his late mother, Therese. Viktor will never, ever get rid of them. Well, he's not getting rid of these pretty, handy Opium side tables either. Here we have yet another magnificent emblem of classic elegance, the Louis XIV Baroque-inspired chest of drawers. In grey, of course. Softly carved, obviously. Column-legged, Parthenon-inspired, necessarily! Did anyone say Baroque?







### Reading corner

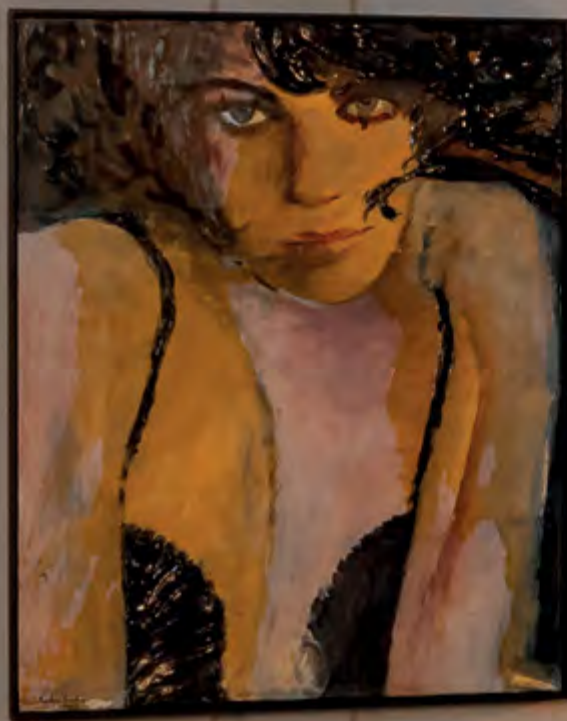
Viktor's most cherished room.

This was meant as an alternative, more intimate, cozier living room. But the lone wolf who owns this property won't let anyone in here. "Quietness requires privacy", he says. Each tiny décor element you may spot here came from Therese's magical hand.

However, Viktor easily admits he's quite fond of the lively pillows here and there and of the trendy lining in those Dalila armchairs. He loves the comfort of that seashell shape, in fact.











Viktor

### Dining

Viktor finds the tapered legs in that extensible Opium table very unique, almost exotic. He appreciates it, nonetheless.

Here we have the Lille chest, with its beautiful high-relief details, elegant design and wonderful marble top.

And these two Louis XV showcases are one of the decorative treasures to spot in this house. Their coldgrey vanished finish gives you a glimpse of raw natural wood whilst presenting a sophisticated design.

And they're stuffed with Therese's porcelain and silver treasures as well as Viktor's fine china private collections, which he never ever touches or uses, obviously.









Viktor

### Bedroom

Viktor has no idea – he’s terrible at memorizing names – but his cherished bed is part of the Gala collection.

Gala, a direct reference and tribute to the muse and opium of Viktor’s most admired artist... Salvador Dali.

Say hello to the Dalila armchairs and tiny comfy reading sofa we’ve just seen downstairs! Yes, Viktor is very fond of them, indeed.

And this ardoise and beige piece serves both as a chest of drawers and as a bureau.

Obviously, our pragmatic architect keeps most of his paper sheets and plans here. You’ll usually find its interior turned into a mess of color pencils and drawers, sketches, geometry instruments and so on...

Is there the need to refer that this full body mirror is never used for its purpose?





Viktor











THE HOME OF

# Margarita, Maria, Emily & Aurora

The pink universe we're about to discover emerged graceful and resourcefully from the contributions of three generations of wonderful, diverse women:

Margarita, a contagiously youthful, creative and fun granny; Maria, a forthright, calm and collected daughter, mom and woman; and the twins, Emily and Aurora, similar in their appearance but so different when it comes to their tastes and personalities.

This mansion reflects femininity and joy in every single detail of its warm, rosy and appealing diversity of colors, textures and styles.





Margarita, Maria, Emily & Aurora



### The Entryway

Say hello to the Canova sofa. Everybody here happens to love its velvety touch and neutral brick tone, which allows grandma Margarita to be inventive with her many, many décor pillows. Maria brought this Vermont side table from her former apartment. She loves the long cabriole legs, the tray design on its top, and, of course... its dainty pink tone.

By the way, this house has a fluffy feline inhabitant named 'Darius'. Yes, Margarita has a Persian passion in her veins and the gorgeous tapestries in this majestic entryway aren't the only thing testifying to it!

Margarita, Maria, Emily & Aurora

### The dining room

This is definitely the most consensual room in the entire house.

Everybody here loves the graceful Lotus II dining table, which is perhaps the most classical piece to spot in the mansion.

Additionally, both Margarita and Maria love to organize sumptuous dinners for their respective friends, and two completely distinct generations require a classy, pleasing set-up.

The Rocaille-inspired Suzanne chairs, cane-backed, with the expected pink lining..

This Louis XV showcase is yet another wonder.

Here, the salmon-pink lacquer was a choice of the twins, who absolutely share granny's pink mania.

Take a look at those vintage curtains inside, enhancing an endless amount of decorative porcelain and high-end tableware.







## Margarita, Maria, Emily & Aurora

As a matter of fact, Margarita's obsession for silverware and china makes her pragmatic daughter a bit nervous. It's understandable, given that she has recently traveled to Japan, Brazil and New Zealand exclusively to acquire some of the most expensive sets to be spotted here!

### The living

Definitely the most daring set in this house, this is where the 13 year-old twins spend most of their free time... watching TV, playing and messing around with anything entertaining and, of course, fighting each other. Physically, yes. The very avant-garde Copacabana TV modular, perfectly symmetric in its design and quite useful with all those drawers... The Bourbon armchairs – one for each twin – marvelously lined with their chosen pillows.













## Margarita, Maria, Emily & Aurora

Here, the boldest, showiest element in this room was also the drive for yet another private war between Margarita and her daughter: Maria isn't very fond of this Louis XV sofa. Her mom, however, doesn't get enough of its unique Persian-inspired floral motifs and chinoise contour.

Margarita would gladly place Persian patterns everywhere around the house, if only her tastes and Maria's weren't so incompatible.

Unanimously chosen and equally cherished, the Lotus II console gives this living a touch of classical elegance. Our sober Maria is particularly in love with its coldgrey vanished finish.

Maria decided to add this gorgeous gold-leaf-endowed classical mirror in order to grant more luminosity to this enchanting room.







### The office

Maria's sense of pragmatism and straightforwardness have a lot to do with her job and passion: chemical engineering.

And this is her place of comfort. It thus reflects her taste for straight lines, sober elegance and simplicity.

Here they call it "the blue room".

This bluebell Majestic dining table – a very appropriate name, indeed - is used as a desk here, and Maria's twin daughters use it for studying and drawing – when mom isn't at home...

In those Louis XVI chairs you can spot Maria's cherished coldgrey vanished finish, perfectly endowed by a very calming reddish lining and the Parthenon-inspired neoclassical legs.





## Margarita, Maria, Emily & Aurora

The Directoire bookcase, in which Maria, Aurora and Emily keep all their academic materials – including Maria's very first chemistry kit as well as three copies of her PhD thesis.

Finally, this Versailles chest was chosen by the twins, hence its extremely contoured shape and elaborated gold handles.





DESIGN INSPIRATIONS  
GAUDI  
INTERIOR VISIONS  
DAVID HICKS  
EILEEN GRAY

Corporate Interiors  
LIICIAN FREUD  
GARDNER  
EXPRESSIVISM  
baunhaus  
DALL

100  
arte  
DALL  
PURNITURE  
ADÀO  
FURNITURE

DAVID HICKS  
EILEEN GRAY  
MONTAGNANI

VOVON  
POMAR  
THE WORLD OF PADE  
TURNER

ARTODAY  
MAGNUM  
MAGNUM  
LUXURY HOTELS  
DALL  
HIMWALKER STORY TELLER

EUROPA 1492  
EUROPA 1492

COOL HOTELS  
CENTURY  
THE WARHOL LOOK  
ADMANNIA BACCOK  
CARAVAGGIO

MAGNUM  
MAGNUM  
LUXURY HOTELS  
DALL  
HIMWALKER STORY TELLER

EUROPA 1492  
EUROPA 1492

IMPRESSIONISMO  
POS IMPRESSIONISMO  
RENASCIMENTO

AFRICA DESAPARECIDA  
ATLAS ENCICLOPÉDICO UNIVERS

Stack of books on the desk, including one with a red cover and another with a black cover.

Two decorative spheres in white bowls on the desk.

Vase of purple and pink flowers on the desk.

White bowl on the desk.

Margarita, Maria, Emily & Aurora

### The twins' bedroom

It was hard for both Maria and Margarita to conciliate the 13-year-olds' tastes and preferences.

But here it is, Emily & Aurora's room:

Two Matisse single beds, in white with the headboards lovingly lined with this striped pink fabric. Very girlish, lively and soft.

During her pregnancy, Maria wanted to call the twins Lara & Zara. Thus she kind of loves the way her chosen bedside table belongs to the Lara collection! It is such a dainty, girlish piece!





## Margarita, Maria, Emily & Aurora

The Pompadour bureau is of double utility: desk and cabinet. Aurora wanted her desk painted blue, Emily wanted hers white, to go with the beds. Maria, however, thought it was safer to leave both chinoise outside and pink inside.







Margarita, Maria, Emily & Aurora

Margarita's bedroom

Our 64-year-old granny has this passion for classical lines, elaborated elements and femininity in its entire splendor.

Another example of the Majestic collection: its headboard was splendidly lined with pink velvet and its structure presents a very neutral amaretto lacquer.

Here we have the Florence side tables, lacquered in beige and with its natural cherry wood top.





TASCHEN  
**FASHION NOW**  
20 QUESTIONS TO THE WORLD'S  
MOST INFLUENTIAL DESIGNERS  
AND ARTISTS  
TASCHEN







Margarita, Maria, Emily & Aurora



And this is Margarita's private reading corner, made of the Louis XV desk in dusty pink and a very comfy Louis XV upholstered chair. Everything is pinkish, warm and lovely in this classical bedroom!





THE HOME OF

# Sylvie

Welcome to the serene refuge of a retired French violinist who had never found her true place of comfort before.

Very fond of hiking, gardening, cooking and anything bricolage, Sylvie has a very expansive, open, warm personality, and her house was tailored to match her character.

The décor in this countryside mansion was inspired by Sylvie's months-long stays in places such as the Russian Altai Mountains, the Svalbard Islands or the Atacama Desert. It thus relies on the appealing of raw woods, ochre and brick tones, natural motifs and a perfect balance between comfort and rural vintage.







Sylvie



### The hallway

The Rincões chest of drawers could figure in any illustrated dictionary as a synonym for vintage: its raw oak wood, daintily carved in the center and its curvy, Rocaille-inspired design were key to create this charming, antique ambiance.

The same applies to this absolutely majestic, extremely carved, gorgeously-shaped mirror! Keep in mind that this house is all about bucolic comfort: Sylvie could never leave the Annelo armchairs out of her entryway.

The pied-de-poule pattern was chosen by her beloved little niece, Mathilda.



### The office

Known as “the teal room”, this cozy office is scarcely utilized by the lady of the house. Currently, Sylvie’s nieces and little cousins use it for studying or reading in their routine weekend trips to ‘dear Sissi’s castle’.

Behind the extremely graceful Oriente desk you can spot the Brasil armchair, a gift from niece Jesse just last Christmas.

Too avant-garde for Sylvie’s sensitivity, but undeniably comfy!

Did anyone say comfort?





Sylvie

This brick-colored, saber-legged, marble-endowed Baroque console is most definitely Sylvie's cup of tea. She thinks it's way too stylish to be kept in this rather austere office, though. Perhaps soon we'll get to see it elsewhere in the house!

Here, some more Rocaille inspiration... always connected to the raw energy of natural oak woods.





Sylvie

### The living

Sylvie's most cherished room: The wallpaper that endows this ambiance is very dear to our French lady, due to the way it reminds her of her childhood sun-kissed autumn afternoons, in a small rustic village in the outskirts of Toulouse.

The various shades of green, brick, gold and ochre match perfectly this lovely set of skirted sofas.

And this beautiful center table is very dear to Sylvie just as well, as it reminds her of classical Greek architecture and her splendid professional and leisure stays in Athens, Thessaloniki, and her beloved Patras.







Leonardo da Vinci

Oliver  
Compton  
& Partners  
& Directors

DAUCHEN





Sylvie

### The dining

This round extendable Opium table is quite necessary each Sunday, when our former violinist organizes her sumptuous familial lunches.

You'll often find up to 30 people gathered at the house, in a Babel Tower parody: French, English, Spanish, Portuguese, Polish and Russian are dynamically spoken and heard in this room.

Yes, Sylvie has plenty of those Canova tweed-lined chairs stored elsewhere...

Of course, she had to find a way of bringing the marvelous autumnal motifs of the wallpaper seen in the living room to her beloved Primrose showcases.

And here it is!





Sylvie

### Reading corner

Perhaps unexpectedly, Sylvie is not particularly fond of reading. She prefers dynamic, challenging outdoor activities, especially gardening.

Yet, she felt the need to create this very comfy reading corner, mainly to display this gorgeous dark-green chaise longue, brought from Monaco. And this uniquely dewps as souvenirs.

Here you can find a theatre ticket for Mariinsky's La Bayadere back from 1985, or an invitation addressed to Sylvie for La Scala's 1997 New Year's concert!











### Hallway

This entryway was daintily adorned with Sylvie's most cherished china, paintings and jars. She considers it to be too small for her endless collection of fine, "meaningful objects", as she calls them. Zora seems to be everybody's favorite armchair.





Sylvie

### The bedroom

A warmer, more intimate, comfortable  
ambiance. Sylvie's bedroom was  
radically tailored to fit her dynamism,  
energy and flare.

Her favorite objects, styles and colors  
have all been gathered here!

She never thought she'd be so fond  
of the striped satin that lines Gala's  
headboard and frame.

Just in case it wasn't obvious enough,  
natural oak is absolutely predominant  
in Sylvie's private world.













Thank you for diving with us into George's vibrant world, for joining Viktor's quiet haven, for mixing into Margarita's colorful rosebud and for exploring some of Sylvie's treasures!

Curious about the concepts and inspiration behind this visual experience?  
Get to know the full story behind this catalog by watching the making-of:



Join AMLiving classic collection online:  
[www.AMLiving.com](http://www.AMLiving.com)  
Explore AMfurniture Group and get to know  
all the other areas of expertise at:  
[www.AMfurnitureGroup.com](http://www.AMfurnitureGroup.com)



LIVING

inspiration  
tradition  
future  
modernity  
know how  
worldwide  
innovation  
technology



inspiration







tradition

10605 455

33

10606 111

10607 160  
258



know how













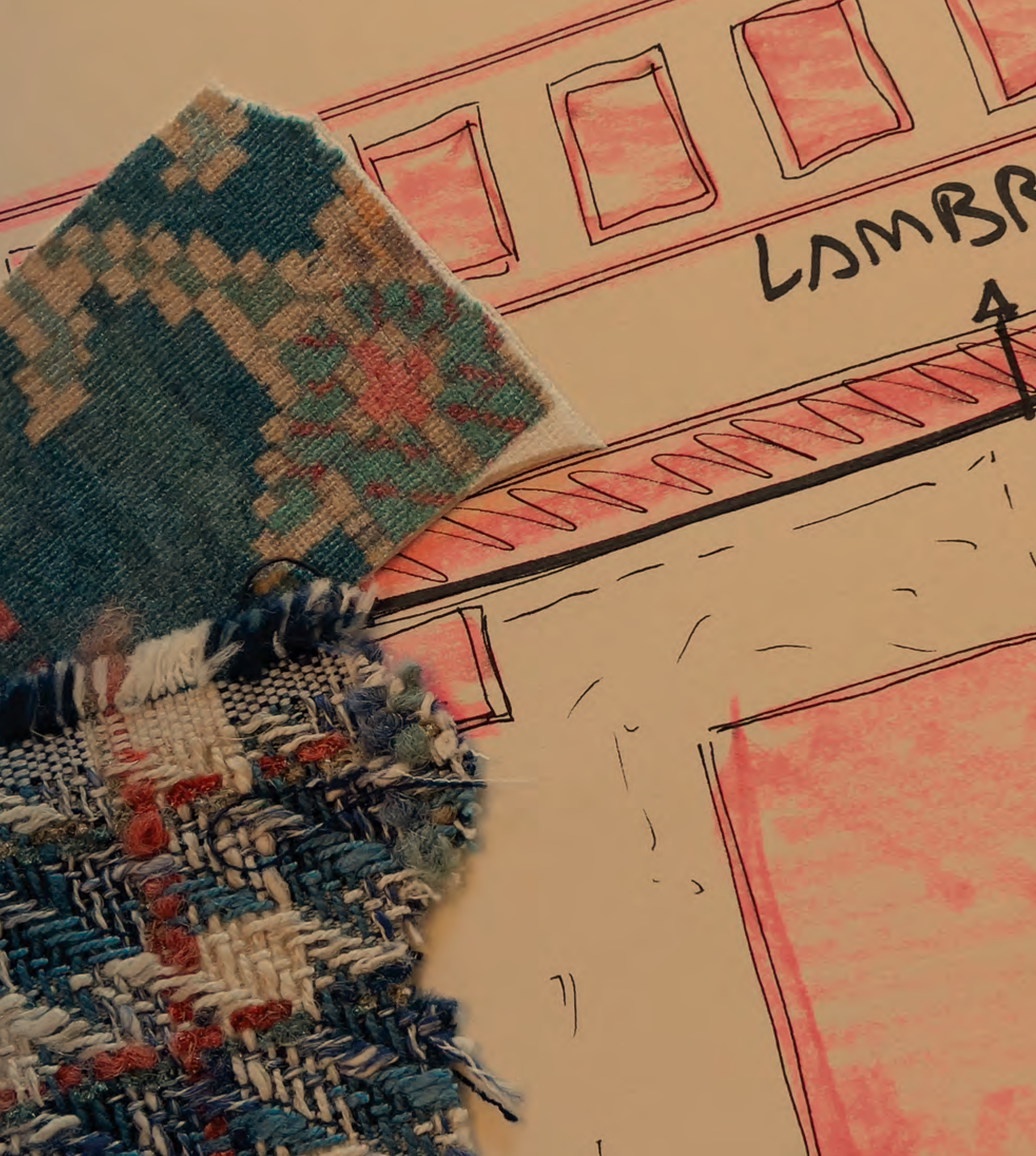




innovation







LAMP  
A



REUER BASS



INSPIRAÇÃO DO SOFÁ



NONO  
NOSTRAL



REUER BACK



# Nelson, Gabrielle & George

Nelson, Gabrielle & George

And then there's George: a vibrant lad in his 30s who nurtures a hedonist passion for life, beauty and comfort. Unlike his parents, George enjoys the substance life and never gets enough of partying with his friends, traveling around the world and filling his home with high-end goods and experiences. Yes, this includes three elements, of course.



8

9

Nelson, Gabrielle & George

**The living**  
 Yet another place full of contrasts: vibrant blue, sprightly red, and the harmony of natural cherry wood is pretty much everywhere. Just in case there were still any doubts regarding this family's absolute favorite color? It has nothing more repeating this blue color! Sure. A quiet corner full of books and comfy chairs... says Nelson.



10

11



12

13

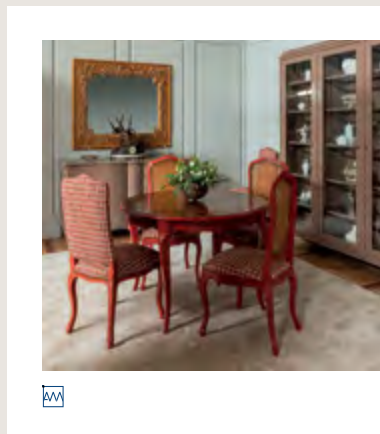


14



Nelson and Gabrielle are extremely passionate about reading and this is where the businessman spends most of his free time. The Director's bookcase holds more than one volume and Nelson's collection isn't anywhere close to being finished. Can you blame Gabrielle's love for classical literature on those famous attributes and the careful details of that lovely side table?

15



**The dining**  
 The most chic is taken by the magnificent Louis XV round table, and the simplicity of its look very gives room for the formal, classic and Louis XV chairs to shine. A difference for the best time. Here Gabrielle keeps her great grandmother's Wedgwood and Royal Doulton porcelain the way they were.

16

17

Nelson, Gabrielle & George



18

19







20



21



22

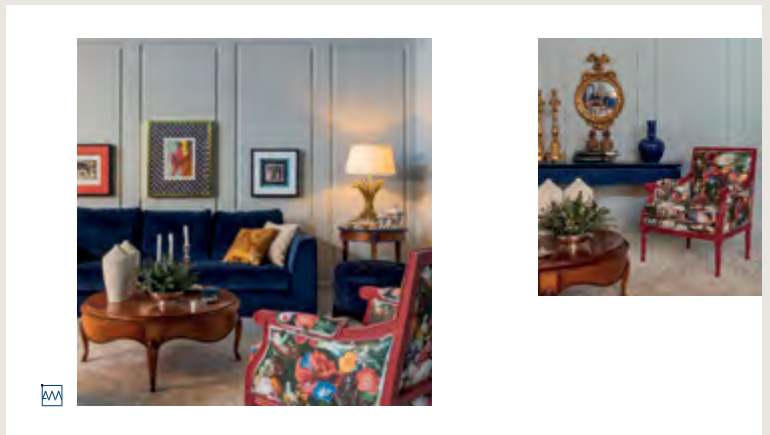
23



24



25



26

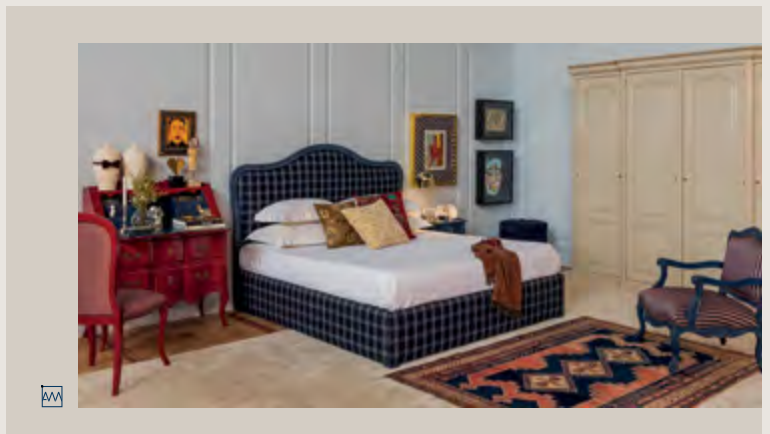
27



28



29



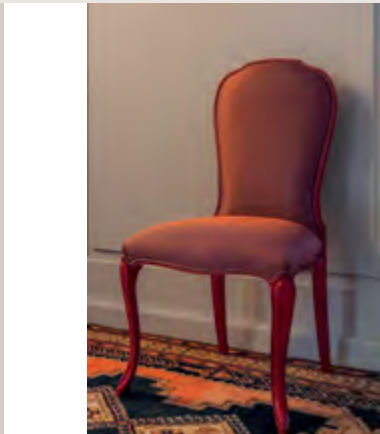
30

31

Nelson, Gabrielle & George

Here we have the leaders working, granting the bedroom a classic look, with its traditional design and sober beige. And this surprising frame houses a George's favorite element. It could be delicate, given the unique color contrast it presents.

Our entrepreneur had had to find a way of making delicate and classical pieces such as the Verona armchair look trendy and alive. The marvelous result being, see the answer.

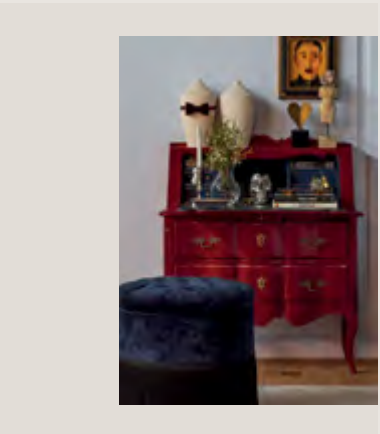



32

33



34



35



36

37



38

**The couple's bedroom**

A rich embrace that reflects Gabrielle's personality, energy and taste in its balanced and elegant palette of navy blue, espresso and natural cherry wood.

The Juliette bed stands out for its magnificent round form, bringing some flare to this quiet atmosphere. And this magical Louis XV chest of drawers is Gabrielle's favorite piece. She's particularly fond of its vibrant navy blue top and the singular contrast. Some more natural cherry details, and...

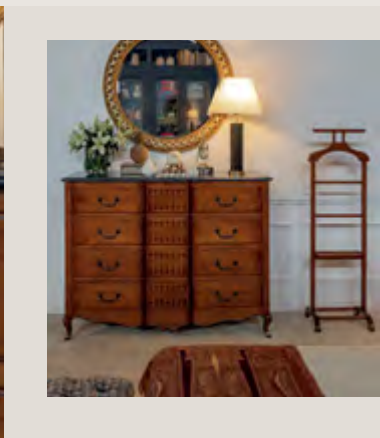
Harry blue has special place in this family's heart. And finally, Nelson's little personal reading corner, with its cozy Louis XV armchair and delicate Caroline side table.

He cherishes this little refuge more than any other place in the world.

39



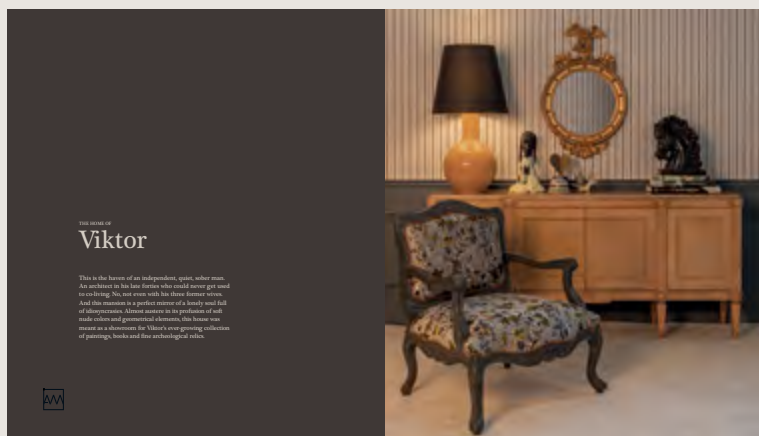
40



41



# Viktor



## THE STORY OF Viktor

This is the home of an independent, quiet, subtle man. An architect in his late twenties who could never get used to eating. Not even with his three former wives. And this woman is a perfect mirror of a lively and full of adventures. Almost entire in its profession of self-made culture and personal elements, the house was created as a statement for Viktor's ever-growing collection of paintings, books and fine art objects of value.



42

43



Viktor

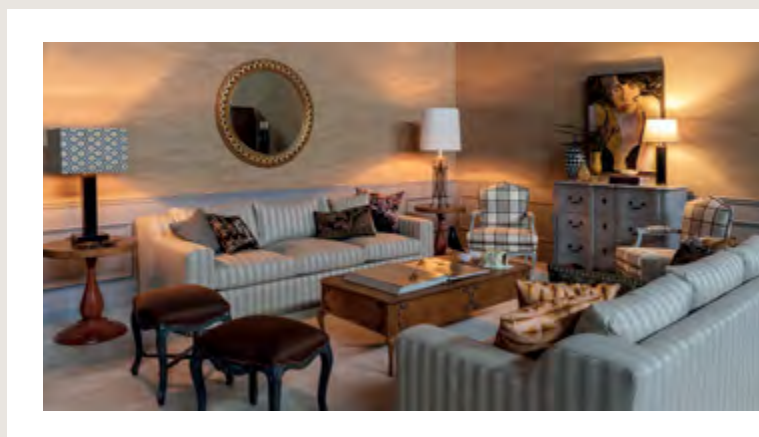
## The entrance

The first element you'll see here mirrors perfectly Viktor's passion for the masculine just as well as his own character. In fact, this sideboard is the decisive furniture element in the entire house. Adds a touch to create architecture and aesthetic, by symmetric design, delicate curved elements and, especially, the Portuguese-inspired columns to best really embody the soul and ambience of this mansion. There's also some space for a Rocaille touch, represented by this dainty Vienna porcelain vase, even when flowers, leaves and non-symmetric elements were allowed, Viktor remained faithful to his love for subtle, made culture.



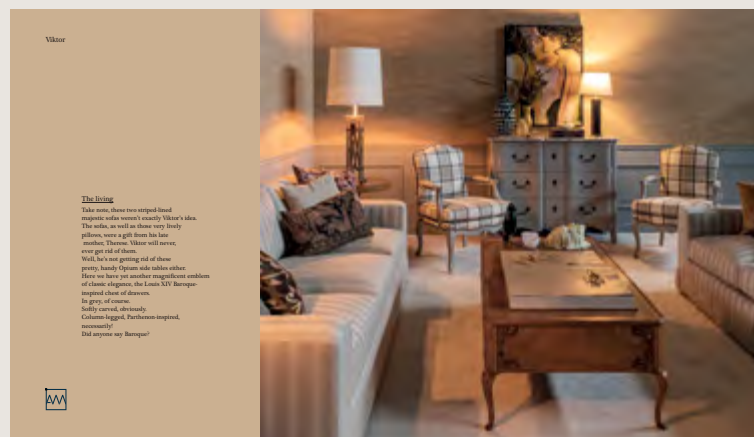
44

45



46

47



Viktor

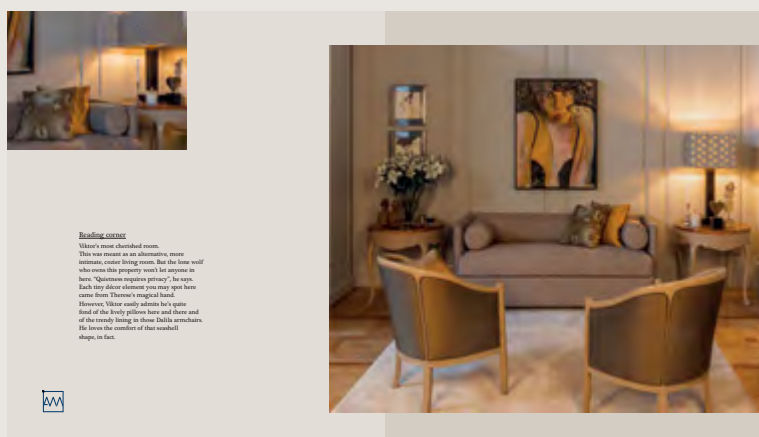
## The living

Take note, there are two striped-lined magnetic sofas were exactly Viktor's idea. The sofa, as well as these very lovely pillows, were a gift from his late mother. Therein, Viktor will never ever get rid of them. Well, he's not getting rid of those pretty, handily Ogden side tables either. Here we have just another magnificent combination of classic elegance, the Louis XV Baroque-inspired detail of drawers. In grey, of course. Slightly curved, obviously. Columns tapered, Portuguese inspired, asymmetrically. Did anyone say Baroque?



48

49



## Reading nook

Viktor's most cherished room. This was meant as an alternative, more intimate reading room. But the line itself who owns this property won't let anyone in here. "Quietness requires privacy," he says. Each tiny detail element you may spot here came from Viktor's singular hand. However, Viktor easily admits he's quite fond of the lovely pillows here and those and of the lovely living in those Dalis artworks. He loves the comfort of their wavyball shape, in fact.



50

51



52

53

Viktor

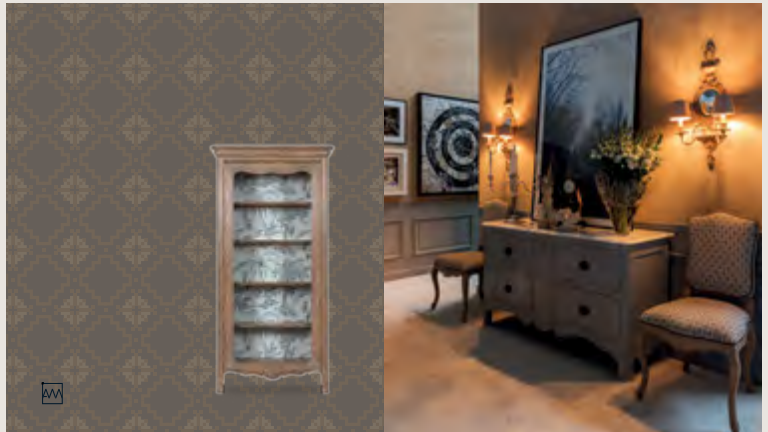
**Dining**

Walter finds the tapered legs in that  
cumbria dignitable very unique almost  
comic. He appreciates a nonchalance.  
Here we have the little chest, with its  
beautiful high-relief details, elegant design  
and wonderful marble top.  
And then the Louis XV. elements are one  
of the decorative treasures to open in this  
house. These vintage handcrafted french pieces  
give you a glimpse of our natural world while  
presenting sophisticated design.  
And they're crafted with Thorne's passion  
and clear resources as well as Viktor's that  
these pieces collections, which he never  
ever reaches or sees, ultimately.



54

55



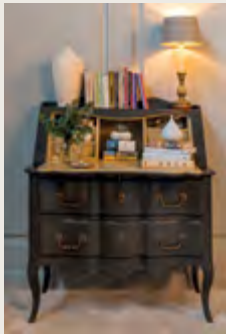
56

57

Viktor

**Bedroom**

Walter has no idea - he's terrible at  
remembering names - but his checked bed  
is part of the Gale collection.  
Gale, a direct reference and tribute to the music  
and spirit of Viktor's most admired artist,  
Salvador Dalí.  
They built in the table structure and they  
couldn't realize with us 'we just seen dominant'  
the, Viktor is very fond of them, indeed.  
And this archive and huge piece serves both as  
a chest of drawers and as a bureau.  
Obviously, our pragmatic architect keeps  
most of the paper sheets and plans here. You'll  
usually find in interior served into a mass of  
color pencils and markers, sketches, geometry  
instruments and so on.  
It shows the need to retain that this full body  
interior is never used for its purpose!



58

59

Viktor



60

61



62



63




# Margarita, Maria, Emily & Aurora

the name of  
**Margarita,  
Maria,  
Emily &  
Aurora**

The pink universe we're about to discover emerges gradually and sensually from the construction of three generations of wonderful, diverse women.

Margarita, a voraciously youthful, creative and fun granny. Maria, a forthright, calm and collected daughter, mom and business, and the twins, Emily and Aurora, similar in their appearance but so different when it comes to their tastes and personalities.

This universe reflects femininity and joy in every single detail of its warm, cozy and appealing diversity of colors, textures and styles.



64

65

Margarita, Maria, Emily & Aurora



**The Furniture**

So hello to the Camera wife. Everybody here happens to live in vintage touch and several back times, which allows grandma Margarita to be creative with her many, many dinner plates, Maria brought this Vermont side table from her former apartment. She loves the long, colorful legs, the tray design on its top, and, of course, its dainty pink tone.

By the way, this house has a fluffy beige inhabitant named 'Doris'. Yes, Margarita has a Doris passion in her veins and the gorgeous tapestries in this magical entry area is the only thing standing in it!

66

67

Margarita, Maria, Emily & Aurora

**The dining room**

This is definitely the most essential room in the entire house.

Everybody has their favorite Louis XV dining table, which is perhaps the most elegant piece to own in the dining room.

Additionally, both Margarita and Maria love to enjoy a moment of peace for their respective friends, and two completely diverse generations require a very different table.

The beautiful inspired Suzanne table, combined with the elegant pink chairs, comes back to the original pink theme.

This Louis XV showcase is yet another wonder from the custom pink tapestry on a choice of the twins, who absolutely adore granny's pink tones. Like a look to these young generations, embracing an endless amount of decorative practices and lightest colors.



68

69

Margarita, Maria, Emily & Aurora

As a matter of fact, Margarita's obsession for color and style makes her pragmatic daughter a bit nervous. It's understandable given that she has recently traveled to Japan, Brazil and New Zealand exclusively to acquire some of the most expensive sets to be spotted here!

**The living**


Behind the scenes during set in the house, this is where the 13 year-old twins spend most of their time, watching TV, playing and hanging around with anything entertaining and, of course, fighting each other. Politically, yes.

The very vintage gold Capodimonte TV stand, perfectly symmetrical in its design and quite useful with all these devices. The bookshelves attachable - one for each twin - conveniently stand with their chosen pillows.





70

71



72

73

74

75

Margarita, Maria, Emily & Aurora

Here, the boldest, showiest element in the room was also the drive for you another prime one: between Margarita and her daughter Maria isn't very fond of this Louis XV sofa. Her mom, however, doesn't get enough of its unique Persian-inspired floral motifs and classic curves.

Margarita would gladly place Persian patterns everywhere around the home, if only her taste and Maria weren't so divergent.

Continuously elegant and equally charmed, the Louis II console gives this living a touch of classical elegance. Our robot Maria is particularly in love with its elegant, curved lines.

Maria decided to add this gorgeous gold leaf-embossed classical mirror in order to grant more harmony to the matching room.



76

77

Margarita, Maria, Emily & Aurora

#### The office

Maria's sense of pragmatism and straightforwardness have a lot to do with her job and profession: chemical engineering.

And this is the place of comfort. In their offices her taste for straight lines, sober elegance and simplicity.

Here they call it "the blue room". The beautiful Majestic dining table - a very appropriate name, indeed - is used as a desk here and Maria's twin daughters use it for studying and drawing - when time isn't at home.

In these Louis XV chairs you can spot Maria's cherished colorful hand-drawn prints, perfectly combined by a very striking reddish living and the Baroque-inspired mechanical legs.



78

79

Margarita, Maria, Emily & Aurora

The Directors' bookshelves in which Maria, Aurora and Emily keep all their favorite materials - including Maria's very fine chemistry kit as well as three copies of her PhD thesis.

Finally, the Versailles chair was chosen by the girls, since its extremely ornamental shape and elegant gold handles.



80

81

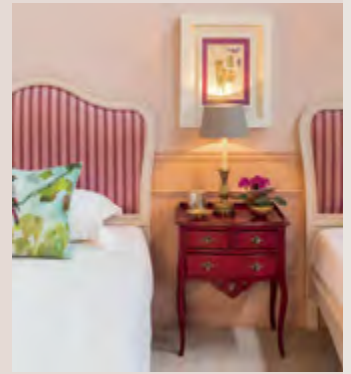
Margarita, Maria, Emily & Aurora

#### The next bedroom

It is not hard for both Maria and Margarita to conclude the 12-year-old's tastes and preferences.

But here it is, Emily & Aurora's room. The Marquis' single bed is done with the headboard is brightly lined with this striped pink fabric. Very girlish, lively and soft.

During her pregnancy, Maria wanted to call the room E. & L. Here, the kind of love the bar chosen beside table belongs to the same collection: it is such a shiny golden piece.



82

83

Margarita, Maria, Emily & Aurora

The Postgraduate bureau is of double utility: desk and cabinet. Aurora needed her desk painted blue. Emily wanted her white to go with the beds.

Maria, however, thought it was wiser to leave both choices outside and pink inside.



84

85

Margarita, Maria, Emily & Aurora

#### Margarita's bedroom

Our 14-year-old granddaughter has this passion for classical lines, refined elements and femininity in a more playful.

Another example of the Majestic collection: its headboard was especially lined with pink velvet and its structure presents a very unusual ornamental design.

Here we have the Florence side table, designed in Italy and with its natural cherry wood top.



86

87





88

89



Margherita, Maria, Emily & Aurora

And this is Margherita's private reading corner, made of the Louis XV desk in dusty pink and a very comfy Louis XV upholstered chair.

Everything is pinkish, warm and lovely in the classical baroque.



90



91


# Sylvie

1920-1930  
**Sylvie**

Welcome to the warm refuge of a retired French couturier who had never found her true place of comfort before.

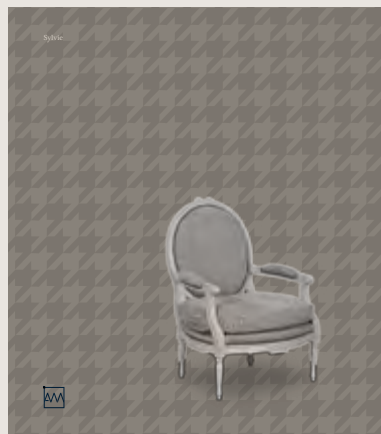
Very fond of hiking, gardening, cooking and reading, Sylvie has a very dynamic, open, warm personality, and her home was tailored to match her character.

The decor in this countryside mansion was inspired by Sylvie's childhood memories in places such as the Basque, Alsace, Brittany, the French Atlantic and the Normandy Coast. It also relies on the appealing use of woods, white and black tones, natural materials and a perfect balance between comfort and rural vivacity.




92

93



94

**The hallway**

The Basque chest of drawers could figure in any illustrated dictionary as a specimen for vivacity. Its oval and curved, slightly convex in the center and its curvy, Rocaille-inspired design were key to create this charming, unique addition.

The same applies to this absolutely majestic, extremely curved, gipsy-style chest of drawers. Keep in mind that this home is all about tactile comfort. Sylvie could never leave the Amelo scones out of her everyday.

The post-deposit pattern was chosen by her beloved hair care, Marbella.

95

**The office**

Known as "the red room", this cozy office is warmly welcomed by the lady of the house. Currently, Sylvie's home and life continue on in the reading or writing in their routine weekend steps to "the blue's creek".

Behind the extremely greened entrance, did you see that the Basal armchair, a gift from some time ago to the Christmas?

You want guide for Sylvie's assistant, but ultimately myself?

Did anyone say comfort?




96

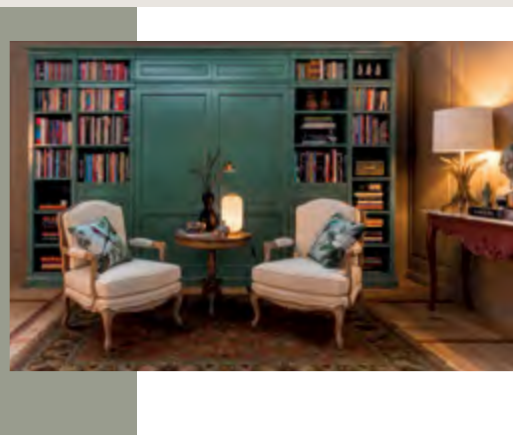
97

**The living**

This brick-colored, white-legged, marble-topped dining console is most definitely Sylvie's cup of tea.

She thinks it's very fun to play on the legs in this rather warm office, though. Perhaps some we get to see a chair in the house!

Here, some more Baselle inspiration, always connected to the raw energy of natural oak woods.

98

99

**The living**

Sylvie's most cherished room. The wallpaper that endures this ambience is very dear to our French lady, due to the way it reminds her of her childhood sea-kissed summer afternoons in a small rustic village in the mountains of Tignes.

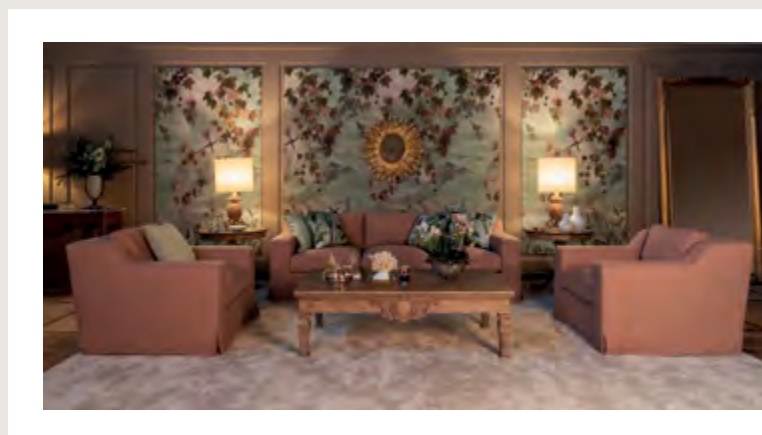
The warm shades of green, brick, gold and white match perfectly this lovely set of floral notes.

And this beautiful center table is very dear to Sylvie just as well, as it reminds her of classical Czech architecture and her splendid professional and leisure stay in Achau, Thunau, and her beloved Paris.




100

101

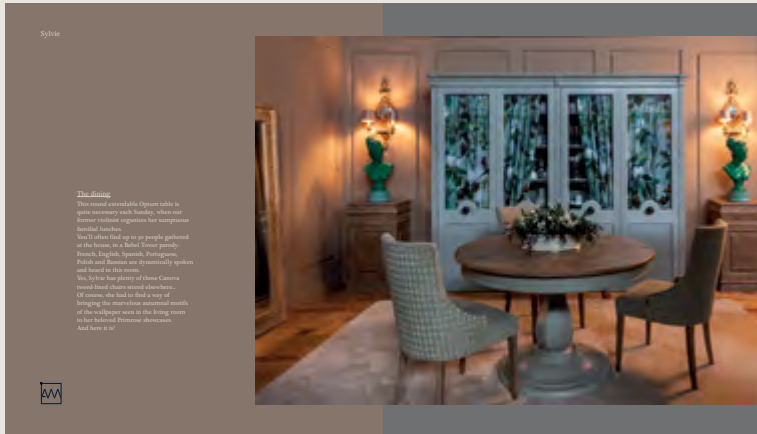


102

103







104

105



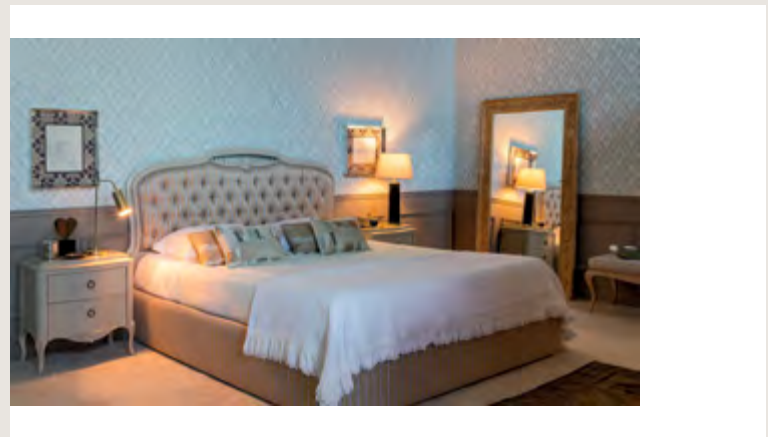
106

107



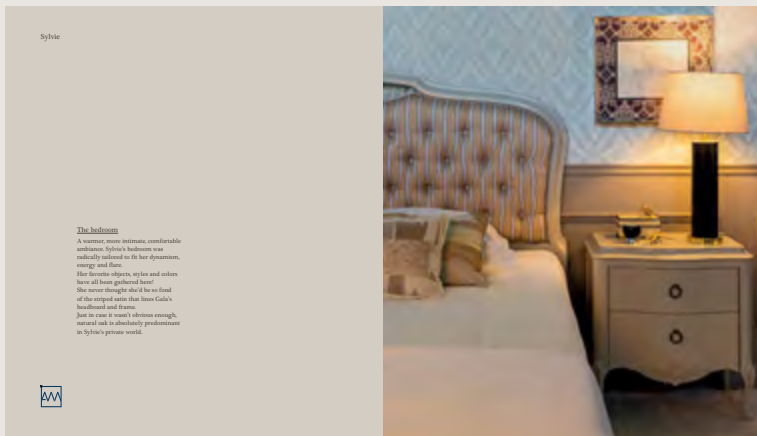
108

109



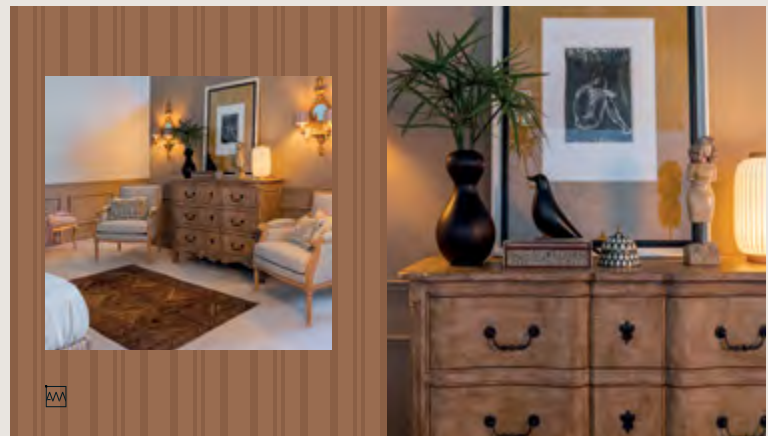
110

111



112

113



114

115

# Classic Collection



CONSOLES 152

SOFAS 154

ARMCHAIRS 155

COFFEE TABLES 156

SIDE TABLES 157

TV UNITS 159

BOOKCASES 159

DINING TABLES 160

CHAIRS 161

SIDEBOARDS 162

CABINETS 163

SHOWCASES 163

DESKS 164

BEDS 165

BEDSIDE TABLES 166

CHEST OF DRAWERS 167

DRESSING TABLES 169

BENCHS 169

WARDROBES 170

YOUNG 170

HANGERS 171

LAMPS 171

MIRRORS 171

FINISHES 172

STANDARD AGING 175



**Baroque II console**  
1,62 x 0,42 x 0,86  
ABQCON02LE.TM  
Page 97



**Baroque console**  
1,62 x 0,42 x 0,90  
17004



**Clarendon console**  
1,50 x 0,40 x 0,75  
ACDCON01LE  
Page 53



**Florence console**  
1,56 x 0,45 x 0,81  
30072TM.LAC.D



**Francis console**  
1,40 x 0,40 x 0,86  
24070



**Gala console**  
1,60 x 0,45 x 0,81  
13072.ST



**Grande console**  
1,64 x 0,46 x 0,81  
AGRACON02LE.TM  
Page 73



**Haruki console**  
1,80 x 0,40 x 0,72  
AHKCON01LE  
Page 10



**Hera console**  
1,59 x 0,41 x 0,84  
29108CN





**Jakob console**  
1,60 x 0,44 x 0,86  
AC3403



**Lotus II console**  
1,40 x 0,45 x 0,79  
AL2CON01LE.TM  
Page 109



**Lotus console**  
1,53 x 0,57 x 0,78  
ALTTOU01LE.SE



**Louis XV console**  
1,13 x 0,38 x 0,82  
ALXVCON02CA



**Macau console**  
1,30 x 0,35 x 0,82  
AC2201Z



**Majestic console**  
1,60 x 0,45 x 0,85  
23070C.FMC.SF.PD



**Matisse console**  
1,40 x 0,39 x 0,85  
15035C



**Rincões II console**  
1,55 x 0,30 x 0,85  
ARCCON02CA  
Page 93



**Rincões console**  
1,05 x 0,30 x 0,85  
AC3034Z



**Vitoria console**  
1,60 x 0,48 x 0,86  
AC3111Z



**Canova sofa**  
1,72 x 0,80 x 0,85  
AMD.SOF042.TC  
Page 65



**Florence sofa**  
2,40 x 0,90 x 1,15  
AMD.SOF501.TC



**Gala sofa**  
1,40 x 0,76 x 0,88  
AMD.SOF011.TC



**George sofa**  
2,50 x 1,00 x 0,90  
AGESOF01CE.TC  
Page 11, 73



**Grace single sofa**  
1,03 x 0,93 x 0,89  
AGRMPLO1CE.TC



**James sofa**  
1,80 x 0,88 x 0,69  
AJMSOF01CE.TC  
Page 61





**Louis XV sofa**  
2,26 x 0,85 x 0,94  
ALXVSOF02LE.TC  
Page 77



**Maryland single sofa**  
1,00 x 1,07 x 0,74  
AMLMPLO1CE.TC  
Page 102



**Maryland sofa**  
2,50 x 1,07 x 0,74  
AMLSOF01CE.TC  
Page 46, 102



**Memory sofa**  
2,20 x 0,92 x 1,00  
MD.SOF102.TC



**Olivia chaise-longue**  
1,75 x 0,81 x 0,76  
AOLCHLO1CE.TC  
Page 74, 107



**Charleston pouf**  
0,55 x 0,50 x 0,55  
ACTPOU01.TC  
Page 35



**Annelo armchair**  
0,72 x 0,79 x 1,02  
AC3239.TC  
Page 93



**Baroque armchair**  
0,72 x 0,62 x 0,99  
20098.TC  
Page 49



**Bourbon armchair**  
0,74 x 0,84 x 0,94  
29303.TC  
Page 71, 99



**Claire armchair**  
0,82 x 0,81 x 0,85  
ACLMAP01CE.TC



**Dalila armchair**  
0,64 x 0,68 x 0,80  
AC3413EC.TC  
Page 63



**Louis XV armchair**  
0,80 x 0,68 x 0,97  
AC3109.TC  
Page 37



**Louis XV armchair**  
0,70 x 0,67 x 0,96  
AC3025.TC



**Louis XVI armchair**  
0,63 x 0,60 x 0,97  
AC3222.PC  
Page 22



**Nina armchair**  
1,05 x 0,81 x 0,82  
YBG.0001.TC



**Tamara armchair**  
0,77 x 0,83 x 0,98  
AMD.SOF0100.TC  
Page 15



**Tulip armchair**  
0,64 x 0,68 x 0,80  
40001.TC



**Viena armchair**  
0,75 x 0,65 x 0,86  
AC3108.TC  
Page 34, 43



**Zora armchair**  
0,75 x 0,75 x 0,90  
AZOCDR02LE.TC  
Page 27, 109



**Florence coffee table**  
1,30 x 0,80 x 0,40  
30067



**Francis coffee table**  
1,20 x 1,20 x 0,43  
24067



**Gala coffee table**  
1,00 x 1,00 x 0,40  
13073.ST  
Page 26







**Galo coffee table**  
1,07 x 1,07 x 0,42  
AC3200



**Goya coffee table**  
1,00 x 1,00 x 0,40  
AC3325TCA.LAC



**Henri coffee table**  
1,10 x 0,80 x 0,45  
AHRMCR01LE.TM  
Page 12



**Hera coffee table**  
1,20 x 1,20 x 0,40  
29106CN



**Lotus coffee table**  
1,30 x 0,80 x 0,40  
40067.NC



**Magnus coffee table**  
1,50 x 0,80 x 0,45  
AMGMCR01CA  
Page 102



**Sabine coffee table**  
1,50 x 0,80 x 0,45  
ASBMCR01CE  
Page 47, 71



**Caroline side table**  
0,50 x 0,50 x 0,50  
ACAMAP01LE  
Page 38



**Charlotte II side table**  
0,64 x 0,50 x 0,65  
ACHAGUE02LE  
Page 73



**Charlotte side table**  
0,64 x 0,50 x 0,73  
AC3099 + AC3099.1



**Charme side table**  
0,65 x 0,65 x 0,70  
ACMGUE02CE  
Page 13



**Florence side table**  
0,60 x 0,60 x 0,64  
30068



**Florence side table**  
0,70 x 0,70 x 0,64  
30022  
Page 51



**Gala side table**  
0,60 x 0,60 x 0,64  
13068



**Goya side table**  
0,62 x 0,62 x 0,60  
AC3308TCEC



**Henri side table**  
0,65 x 0,55 x 0,65  
AHRMAP01LE.TM  
Page 11



**Hera side table**  
0,62 x 0,62 x 0,60  
29107CN



**Jade side table**  
0,60 x 0,40 x 0,60  
AJAGUE02LE  
Page 36



**Jakob side table**  
0,58 x 0,46 x 0,70  
AC3402



**Liberty trolley**  
0,77 x 0,47 x 0,78  
ALYCCH02CE  
Page 28



**Lotus side table**  
0,60 x 0,60 x 0,62  
40068.NC



**Magnus side table**  
0,60 x 0,60 x 0,60  
AMGMAP01LE  
Page 73



**Opium side table**  
0,60 x 0,60 x 0,65  
AOPGUE0301  
Page 46



**Opium side table**  
Ø 0,65 x 0,65  
17088.1



**Sabine side table**  
0,50 x 0,50 x 0,61  
ASBMAP01CE  
Page 15



**Tango side table**  
Ø 0,72 x 0,65  
17014



**Tango side table**  
0,72 x 0,72 x 0,65  
ATGGUE02CA  
Page 99





**Vermont side table**  
0,65 x 0,65 x 0,70  
AVEGUE02LE  
Page 65



**Jacques column**  
0,55 x 0,40 x 0,90  
AJQCOLO1CA  
Page 13, 104



**Francis tv unit**  
2,26 x 0,52 x 0,51  
24074



**Gala tv unit**  
2,25 x 0,51 x 0,50  
13074.N



**Gala tv unit**  
1,50 x 0,51 x 0,60  
13071CA



**Baviera bookcase**  
3,15 x 0,48 x 2,22  
D7002C.LAC.1



**Florence dining table**  
1,80 (0,45) x 1,00 x 0,78  
30062



**Gala dining table**  
2,00 (2,00x0,50) x 1,10 x 0,78  
13065



**Lotus II dining table**  
2,45 x 1,15 x 0,74  
AL2MJT01CE  
Page 69



**Lotus dining table**  
1,95 (2,56) x 1,15 x 0,78  
ALTMJT0109



**Louis XV dining table**  
1,20 x 1,20 x 0,78  
AC3097Z  
Page 16



**Majestic dining table**  
1,80 (2,00x0,42) x 1,10 x 0,78  
23066C



**Majestic Gold dining table**  
1,80 x 1,10 x 0,78  
23062C.FD  
Page 79



**Opium dining table**  
1,30 x 1,30 x 0,78  
17020TCA.LAC  
Page 55, 105





**Camilla chair**  
0,54 x 0,63 x 0,95  
ACAMCADO1CA.TC  
Page 105



**Florence chair**  
0,54 x 0,60 x 0,83  
30059.TC



**Francis chair**  
0,54 x 0,53 x 1,01  
26002C.TC  
Page 55



**Francis chair**  
0,54 x 0,53 x 1,01  
26004CA.2.PC



**Gala chair**  
0,52 x 0,52 x 1,01  
13069.TC  
Page 33



**Gala chair**  
0,52 x 0,48 x 0,98  
13059CA.TC  
Page 97



**Louis XV chair**  
0,54 x 0,56 x 1,10  
AC3106.TC  
Page 16, 91



**Louis XV chair**  
0,53 x 0,56 x 1,10  
AC6153.TC



**Louis XVI chair**  
0,51 x 0,50 x 0,98  
23101.TC  
Page 28



**Louis XVI chair**  
0,48 x 0,47 x 0,93  
AC3227.PC  
Page 23



**Louis XVI bar chair**  
0,45 x 0,42 x 1,25  
23100.TC



**Majestic chair**  
0,54 x 0,55 x 1,03  
23059.TC



**Suzanne chair**  
0,54 x 0,57 x 1,08  
AC3330.TC  
Page 16, 69



**Brasil revolving chair**  
0,54 x 0,54 x 0,95  
6613C



**Gala revolving chair**  
0,59 x 0,51 x 0,84  
13043CA.PC



**Margaret revolving chair**  
0,63 x 0,72 x 0,99  
AMTCDR01.PC



**Adonis sideboard**  
1,82 x 0,40 x 0,84  
AADAPA01CE  
Page 43



**Adonis sideboard**  
1,50 x 0,41 x 0,84  
17006CA



**Florence sideboard**  
1,86 x 0,54 x 0,96  
30050



**Gala sideboard**  
1,76 x 0,55 x 0,95  
13050



**Lotus sideboard**  
1,75 x 0,53 x 0,95  
ALTAPA0209



**Louis XV sideboard**  
1,95 x 0,56 x 0,95  
AC3213





**Louis XV sideboard**  
1,75 x 0,55 x 0,95  
AC6150Y  
Page 19



**Majestic sideboard**  
1,85 x 0,60 x 0,95  
23051C.FMC.SF.PD



**Lotus bar cabinet**  
0,91 x 0,46 x 1,55  
AL2MVB01LE



**Lotus bar cabinet**  
1,20 x 0,45 x 1,60  
ALTMVB0109



**Mandarin bar cabinet**  
1,19 x 0,47 x 1,59  
17007.D



**Oriental cabinet**  
1,20 x 0,45 x 1,60  
AC3061Z



**Oriental bar cabinet**  
1,20 x 0,45 x 1,60  
AORMVB03LE  
Page 12



**Eleanor showcase**  
2,01 x 0,46 x 2,01  
AELVIT01LE  
Page 16



**Florence showcase**  
1,64 x 0,46 x 2,20  
30054



**Gala showcase**  
0,92 x 0,46 x 2,00  
13052D.1



**Harold showcase**  
1,44 x 0,51 x 2,11  
AHDVIT01LE  
Page 107



**Lotus showcase**  
0,92 x 0,48 x 2,00  
ALTVIT01LE



**Louis XV showcase**  
1,80 x 0,56 x 2,30  
AC6152Y



**Louis XV showcase**  
1,94 x 0,51 x 2,25  
AC6147  
Page 65



**Louis XV showcase**  
1,07 x 0,52 x 2,00  
ALXVVIT04LE  
Page 56



**Majestic showcase**  
1,09 x 0,52 x 2,01  
23052C.FMC.SF.PD



**Normandie showcase**  
1,97 x 0,49 x 2,20  
AC3073Z  
Page 22



**Pompadour showcase**  
0,85 x 0,42 x 1,85  
AC3211Z



**Primrose showcase**  
1,88 x 0,46 x 2,20  
APMVIT01LE  
Page 105



**France desk**  
1,00 x 0,54 x 1,13  
AC3079Z  
Page 59



**Louis XV desk**  
1,58 x 0,78 x 0,79  
AC3091C.PC  
Page 91



**Louis XVI desk**  
1,50 x 0,75 x 0,78  
AC3221.PC  
Page 23







**Oriente desk**  
1,50 x 0,75 x 0,78  
6501C.PC  
Page 96



**Pompadour desk**  
0,75 x 0,41 x 1,34  
AC3098.PC  
Page 84



**Gala bed**  
1,96(1,80 x 2,00) x 2,15 x 1,52  
AGLCAM01LE.TC  
Page 61



**Gala bed**  
2,08(1,80 x 2,00) x 1,91 x 1,30  
AGLCAM02LE.TC  
Page 110



**Gala bed**  
1,73 (1,60 x 2,00) x 2,13 x 1,47  
13004E



**Juliette bed**  
2,12(1,80 x 2,00) x 1,89 x 1,35  
AJUCAM02LE.TC  
Page 36



**Lotus bed**  
2,09 x 2,12 x 1,33  
ALTCAM01LE.TC



**Majestic II bed**  
2,12(1,80 x 2,00) x 1,89 x 1,50  
AMJ2CAM02LE.TC  
Page 88



**Majestic bed**  
2,10 (1,80 x 2,00) x 2,12 x 1,50  
24005EC.TC



**Matisse bed**  
1,21(1 x 1,90) x 2,02 x 1,40  
15059E.LAC.TC  
Page 83



**Matisse bed**  
2,02 (1,80 x 2,00) x 1,97 x 1,40  
AMACAM02LE.TC  
Page 30



**Adonis bedside table**  
0,60 x 0,38 x 0,66  
25021



**Dalila bedside table**  
0,60 x 0,40 x 0,62  
AC3214.2



**Florence bedside table**  
0,65 x 0,39 x 0,73  
30021.



**Gala II bedside table**  
0,60 x 0,40 x 0,63  
AGLCMI02LE  
Page 110



**Gala bedside table**  
0,60 x 0,40 x 0,63  
13021



**Lara bedside table**  
0,56 x 0,40 x 0,65  
ALACMI02LE  
Page 83



**Lotus bedside table**  
0,58 x 0,42 x 0,70  
ALTCMI0106



**Majestic bedside table**  
0,60 x 0,40 x 0,61  
23022C.FMC.SF.P



**Majestic bedside table**  
0,60 x 0,40 x 0,61  
23021C.FMC.SF.P



**Majestic gold bedside table**  
0,60 x 0,40 x 0,61  
23021C.FMC.P





**Mareau bedside table**  
0,53 x 0,37 x 0,60  
AMARCMIO2LE  
Page 31



**Gala chiffonier**  
0,77 x 0,50 x 1,37  
13025



**Adonis chest of drawers**  
1,00 x 0,50 x 0,91  
AC3307.00000  
Page 9



**Adonis chest of drawers**  
1,30 x 0,52 x 0,90  
25024



**Bizet chest of drawers**  
0,90 x 0,50 x 0,86  
AC6146 + AC6146.1



**Dalila chest of drawers**  
1,30 x 0,52 x 0,91  
AC3215.2



**Dante chest of drawers**  
1,30 x 0,52 x 0,88  
17012.D



**Florence chest of drawers**  
1,35 x 0,53 x 0,92  
30023



**Gala chest of drawers**  
1,35 x 0,53 x 1,00  
13028



Gala chest of drawers  
1,35 x 0,53 x 0,85  
13023



Gaudi chest of drawers  
1,35 x 0,52 x 0,89  
29105NLAC.D



Lille chest of drawers  
1,50 x 0,55 x 0,85  
29109C  
Page 55



Lotus chest of drawers  
1,32 x 0,52 x 0,93  
ALTCOM0106



Louis XV chest of drawers  
0,80 x 0,45 x 0,70  
ALXVCOM03CE.TM  
Page 60



Louis XV chest of drawers  
1,50 x 0,55 x 1,12  
ALXVCOM02CE  
Page 41



Louis XIV chest of drawers  
1,30 x 0,53 x 1,00  
AC3048.CA  
Page 49, 114



Majestic chest of drawers  
1,32 x 0,54 x 0,88  
23024C.FMC.SF.P



Majestic Gold chest of drawers  
1,32 x 0,54 x 0,88  
AC3488TC.CALAC



Parati chest of drawers  
0,90 x 0,50 x 0,92  
AC3218Z + AC3093.3



Parati chest of drawers  
1,30 x 0,49 x 0,92  
APACOM02LE.TM  
Page 23



Versalhes chest of drawers  
1,29 x 0,60 x 0,86  
AC3085Z  
Page 80





**Gala dressing table**  
1,60 x 0,42 x 1,52  
13020



**Lotus dressing table**  
1,61 x 0,57 x 1,52  
ALTOU01LE.SE + ALTESPTOU01LE



**Florence bench**  
1,54 x 0,52 x 0,48  
30019.TC



**Louis XV bench**  
0,54 x 0,40 x 0,51  
AC3414.2.TC  
Page 46



**Louis XV bench**  
0,54 x 0,46 x 0,51  
AC3414.TC



**Louis XV bench**  
0,42 x 0,80 x 0,45  
ALXVBQT02CE.TC  
Page 36



**Louis XV bench**  
0,70 x 0,62 x 0,48  
ALXVBQT03LE.TC



**Lotus bench**  
1,57 x 0,55 x 0,49  
ALTBQT01LE.TC



**Tamara bench**  
0,77 x 0,62 x 0,48  
AMD.SOF0101.TC



**Vogue bench**  
1,10 x 0,45 x 0,48  
AVGBQT02LE.TC  
Page 111



**Vogue bench**  
1,51 x 0,56 x 0,48  
29226.TC



**Gala wardrobe**  
2,21 x 0,61 x 2,30  
13031



**Isadora wardrobe**  
2,60 x 0,72 x 2,22  
AISROU01LE  
Page 31



**Aramis bed**  
2,05 ↑(1,90x0,90) ↓(1,90x0,90) x 1,01 x 0,95  
12002.1



**Aramis bookcase**  
0,95 x 0,45 x 1,95  
12045



**Aramis chiffonnier**  
0,65 x 0,42 x 1,20  
12043



**Aramis desk**  
1,25 x 0,60 x 0,84  
12041



**Aramis wardrobe**  
1,20 x 0,65 x 1,95  
12018





**Cabide hanger**  
0,50 x 0,38 x 1,04  
AC3027



**Lawrence hanger**  
0,47 x 0,37 x 1,45  
ALWCBD01CE  
Page 41



**Picasso hanger**  
0,95 x 0,50 x 2,12  
AC3350



**Piccadilly hanger**  
0,97 x 0,18 x 1,95  
APYCBD01LE.ES



**Brasil lamp**  
0,50 x 0,50 x 1,50  
6610C + 0111.AJ5220



**Dalila mirror**  
1,00 x 0,03 x 1,94  
11726



**Florence mirror**  
ø 1,00 x 0,03  
30034



**Gala mirror**  
1,20 x 0,03 x 0,72  
13034



**Lotus mirror**  
1,29 x 0,04 x 0,70  
ALTESPTOU01LE



**Alba**  
Simples  
Oak wood



**AM**  
Aged with dust  
Cherry wood



**Amber**  
Aged with dust  
Cherry wood



**Carvalho**  
Simples  
Oak wood



**Cerejeira natural**  
Antique  
Cherry wood



**Cherry**  
Antique  
Cherry wood



**Mornata**  
Aged with dust  
Oak wood



**Paris antiquário**  
Cherry wood



**Verona**  
Aged with dust  
Cherry wood



**Walnut**  
Simples  
Walnut wood







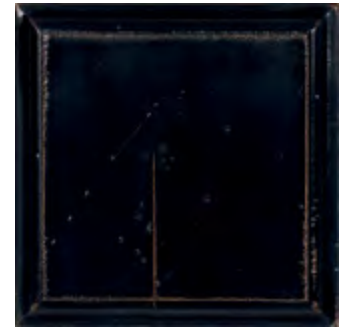
**Amaretto**  
Simple



**Anchor**  
Antique



**Ardoise**  
Antique



**Black**  
Aged with dust



**Bluebell**  
Antique



**Blush**  
Simple



**Chinoise**  
Antique



**Coco**  
Simple



**Coldgrey**  
Simple



**Dusty pink**  
Antique



**Green**  
Simple



**Gris**  
Simple



**Khaki**  
Antique



**Light Rose**  
Simple



**Maroon**  
Antique



**Nigra**  
Aged with dust



**Rose**  
Antique



**Sepia**  
Antique



**Tan**  
Antique



**Teal**  
Simple



**Terra**  
Antique



**Terracotta**  
Antique



**White patine**  
Aged with dust

Finishes

Using traditional techniques, AM Living classic collection finishes highlight wood's natural attributes while adding a touch of history to each piece.





**Siena**  
Simple



**Siena**  
Antique



**Siena**  
Aged with dust



**Coldgrey**  
Simple



**Coldgrey**  
Antique



**Coldgrey**  
Aged with dust

### Simple

Focuses on the natural attributes of a chosen lacquer, displaying eroded corners.

### Antique

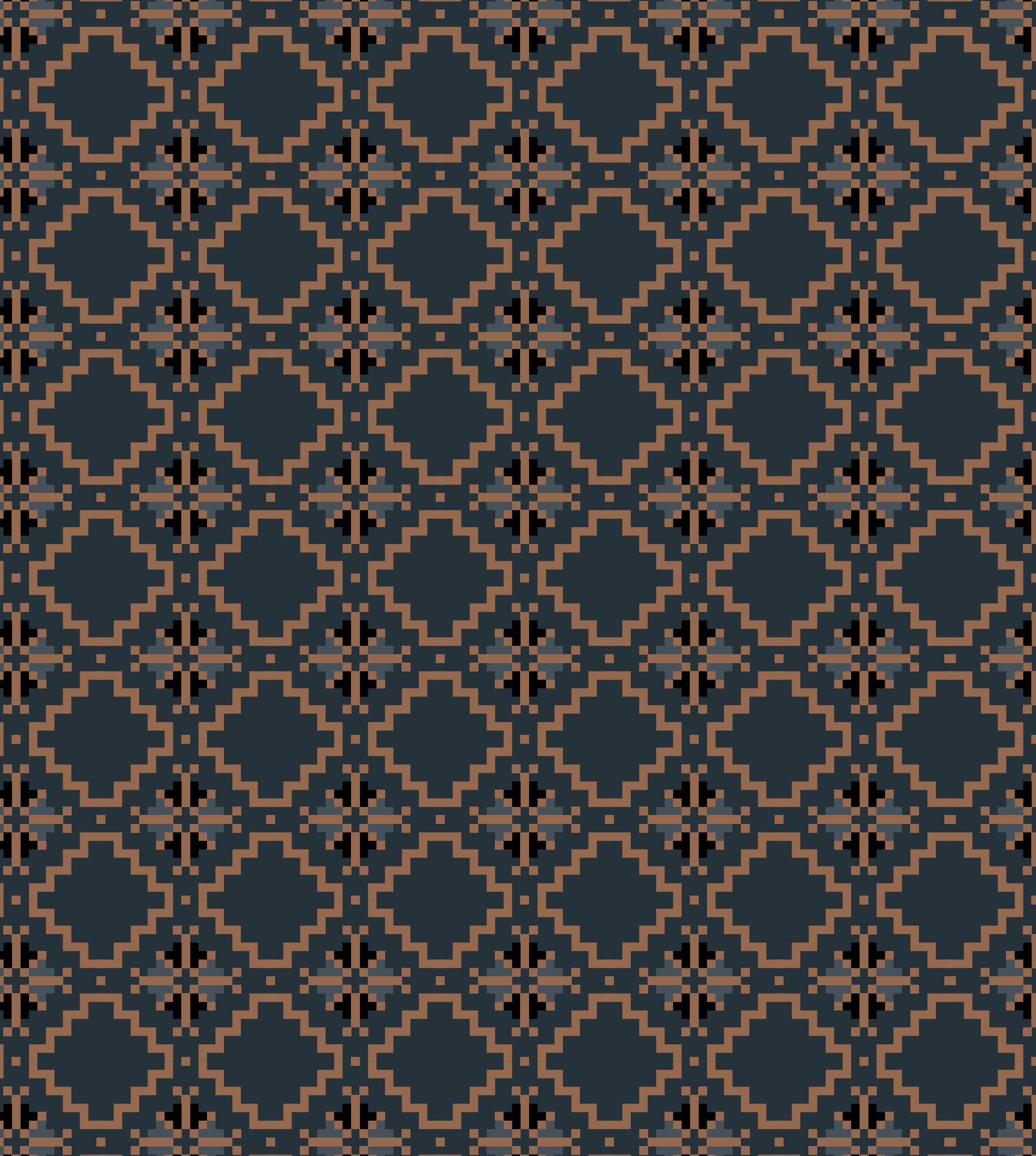
The in-between solution for those who enjoy maintaining the natural attributes of a color, while adding a softer aging effect.

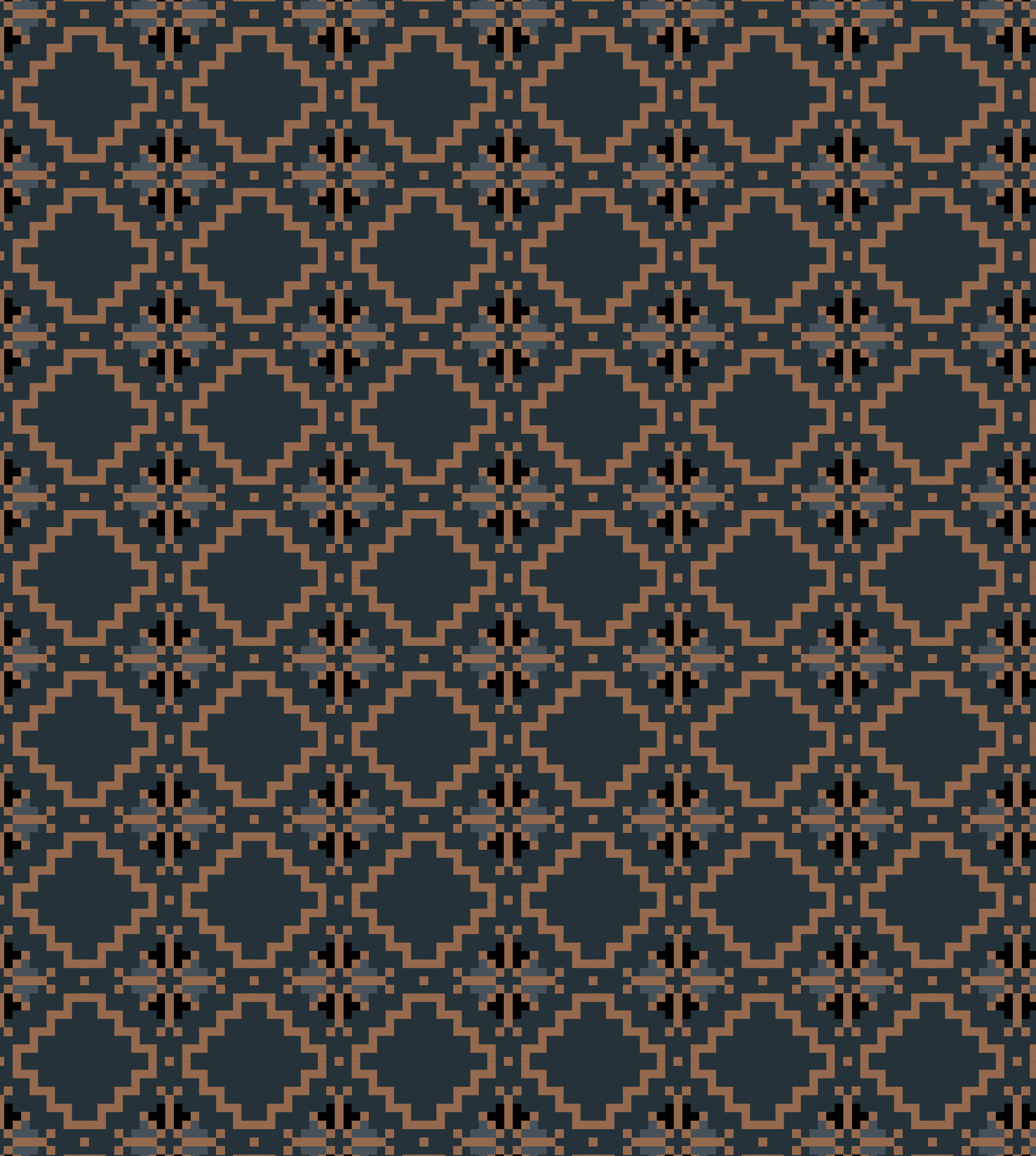
### Aged with dust

Reflects the classical tradition of wood aging, using eroding and distressing techniques, adding tears and marks that bring a vintage touch to your piece.

Catalogs and price lists are subject to revisions and may suffer alterations, for that reason, make sure you are accessing the latest version by always using the link [www.amfurnituregroup.com/AM-Living-Classic-Collection-Catalog.pdf](http://www.amfurnituregroup.com/AM-Living-Classic-Collection-Catalog.pdf). Except for typo or misprint, the charged prices and the information provided will always correspond to the updated version of the online file. Product availability is subject to stock availability or production capacity. Last update: 01/02/2022.

Design: Atelier Nunes e Pã  
Storyteller: Alexandra Martins  
Concept and Art Director: Carlos Alexandre Santos  
Interior photography: António Chaves  
Acknowledgements: Empatias - Decoração de Interiores  
All rights reserved to AMLiving - AMfurniture Group







Co-financiado por:



UNIÃO EUROPEIA  
Fundo Europeu  
de Desenvolvimento Regional

[WWW.AMLIVING.COM](http://WWW.AMLIVING.COM)